



DUST COLLECTORS

MODELS 2DF8, 2DF12, 2DF16, 3DF24, 3DF36, 3DF60, 3DF72, 4DF32, 4DF48, 4DF64, 4DF80

Downflo[®] Cartridge Collector permits higher than normal filter rates at reduced pressure drop without loss of efficiency.

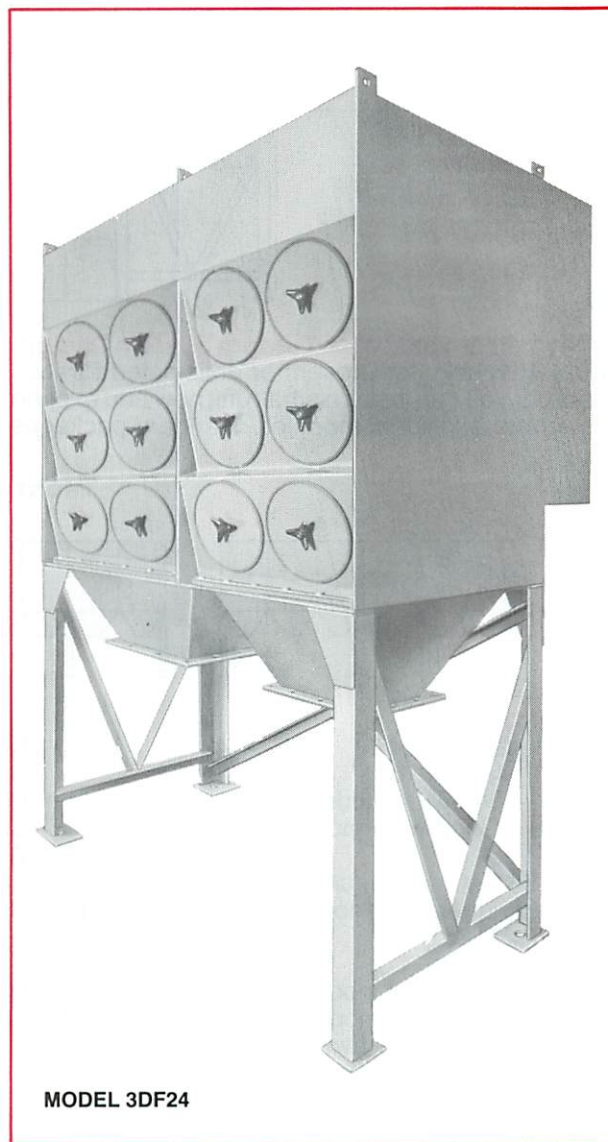
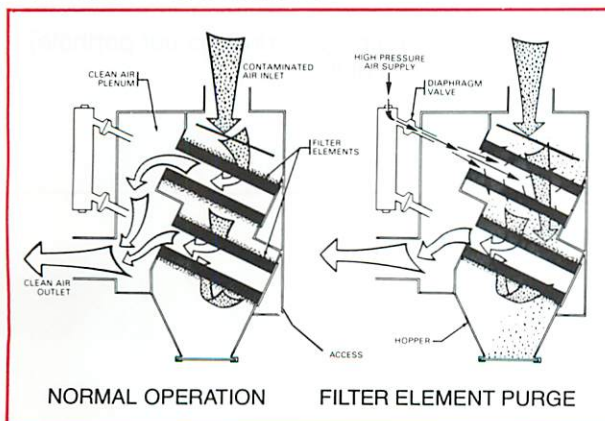
In normal pulse-jet collector operation, air enters the hopper and flows upward. When bags or cartridges are pulse-jet cleaned, some dislodged dust is re-entrained, thus reducing cleaning and filtering efficiency. But Downflo design reverses the direction of airflow, taking advantage of gravity and airflow direction, forcing dislodged dust to fall directly into the collector hopper. This results in much cleaner filters and lower operating pressure drop. High filtration velocity and fine particulate applications will be especially benefited by Downflo design.

Compact Modular Design

A number of factory-assembled modules are available to meet varying space requirements. For those areas with low headroom, specify modules two elements high (8 elements/module). Where floor space is at a premium and headroom is not a consideration, specify modules either three elements high (12 elements/module) or four high (16 elements/module). A typical unit can save as much as 40% in floor space and from one to three feet in height compared to standard collectors of the same capacity.

Designed for Easy Maintenance

Two-element-high units can be serviced without the need for walkways or platforms; a benefit of Downflo's unique front cartridge removal design. Three- and four-high units can be accessed from a short platform or scaffold. Service personnel gain entry into cartridge compartment through convenient access portholes. Unscrew the knob/handle and remove the door to expose cartridges. Workers are always outside the unit, on the clean air side, away from hazardous conditions.



Directional downflow of contaminated air, assisted by gravity, minimizes re-entrainment of dust dislodged by cleaning pulse of 90 psig compressed air.



DUST COLLECTORS

MODELS 2DF8, 2DF12, 2DF16, 3DF24, 3DF36, 3DF60, 3DF72, 4DF32, 4DF48, 4DF64, 4DF80

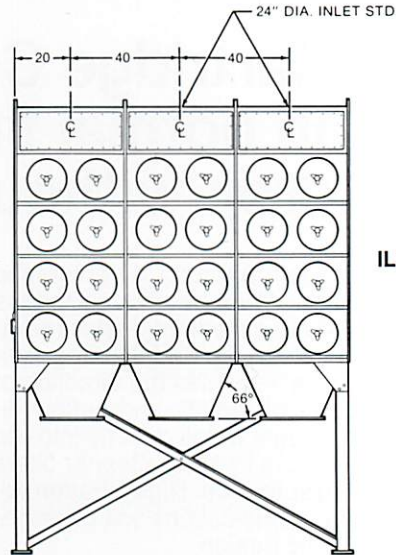
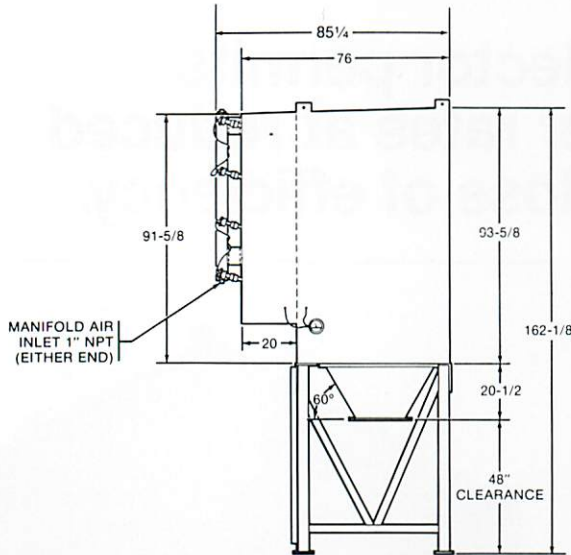
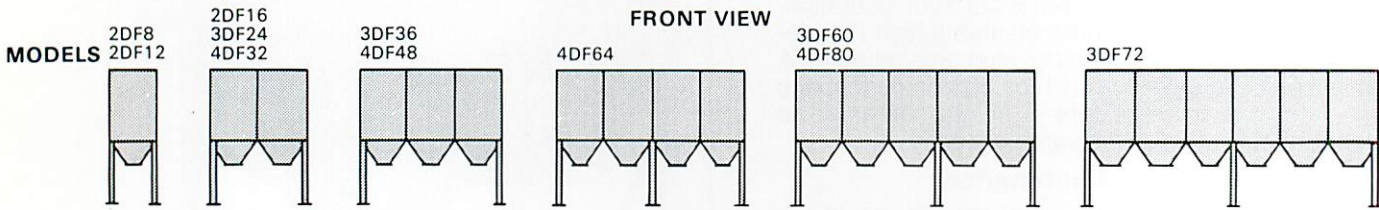


ILLUSTRATION
4DF48

Downflo® Flexibility for Custom System Design.
You can specify for present or anticipated filtration needs, or you can install a small unit now and expand it later with additional modules. Standard packages

are as large as nine modules long, with air handling capacities up to 60,000 cfm. These may be joined in the field to meet any system requirement. Torit Ultra-Web® cartridges are used in all modules.



Specifications

Height—2DF—124⁷/₈" 3DF—143¹/₂"
4DF—162¹/₈"
Length—Two-wide module—40"
Three-wide module—58³/₁₆"
Depth—85¹/₄"
Actual Filter Area (per cartridge)—226 sq. ft.
Filter cartridge dimensions—12³/₄" OD, 8³/₄" ID,
26" long

Number of valves—One per every two cartridges
Compressed air required—90-100 psig clean dry air
Power for controls—120 VAC, 50-60hz
Standard finish—Torit Blue primer
Wind load rating—100 mph
Seismic rating—Zone 3
Housing rating—± 20" H₂O

NOTE: First part of model number indicates number of vertical rows of portholes (2 cartridges per porthole). Last part of model number indicates total number of filter cartridges in unit. (All units are two cartridges deep).



Donaldson Company, Inc.
Torit Division
P.O. Box 1299
Minneapolis, Minnesota 55440
Parts & Service
1-800-365-1331