



# Torit<sup>®</sup> Dryflo<sup>™</sup> Mist Collectors

## The only cartridge collector engineered specifically for mist.

The Torit Dryflo mist collector uses a three stage filtration system to collect oil and coolant mists from wet machining operations. Stage one is a metal mesh filter which collects large mist droplets and solids from machining. Stage two is a special outer wrap of synthetic high loft material which coalesces small mist droplets into larger drops. Stage three is a NEW proprietary filter cartridge media developed exclusively for mist collection.

As the Dryflo cartridge collects mist, the efficiency of the cartridge increases. The cartridge is vertically oriented and has vertical pleats, allowing gravity to help drain the collected oil.

## Designed for easy maintenance.

The unique filter retention system makes filter changes safe, quick and easy, with minimal worker contact with the collected oil.

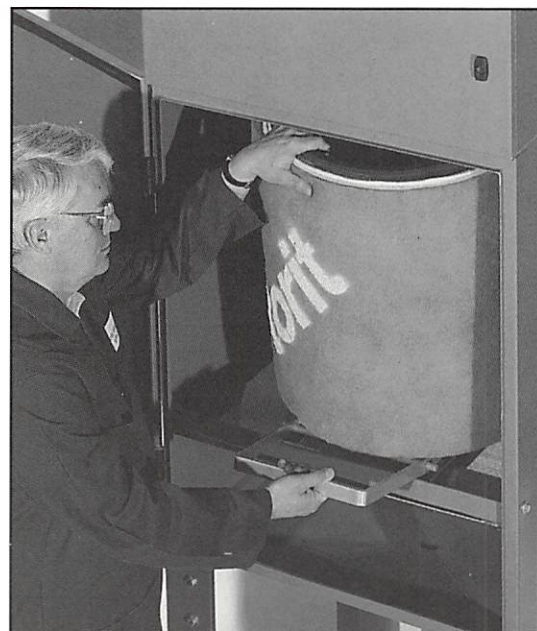
Hinged doors allow for easy access to the filter cartridge, especially when the unit is mounted near the ceiling.

A special Magnehelic<sup>®</sup> Gage with a "red" zone indicates when it is time to change the filter, taking the guesswork out of maintenance.

The Dryflo collects mist from straight oils, mineral oils, water-soluble oils, semi-synthetic and synthetic coolants.



*Dryflo Model C*

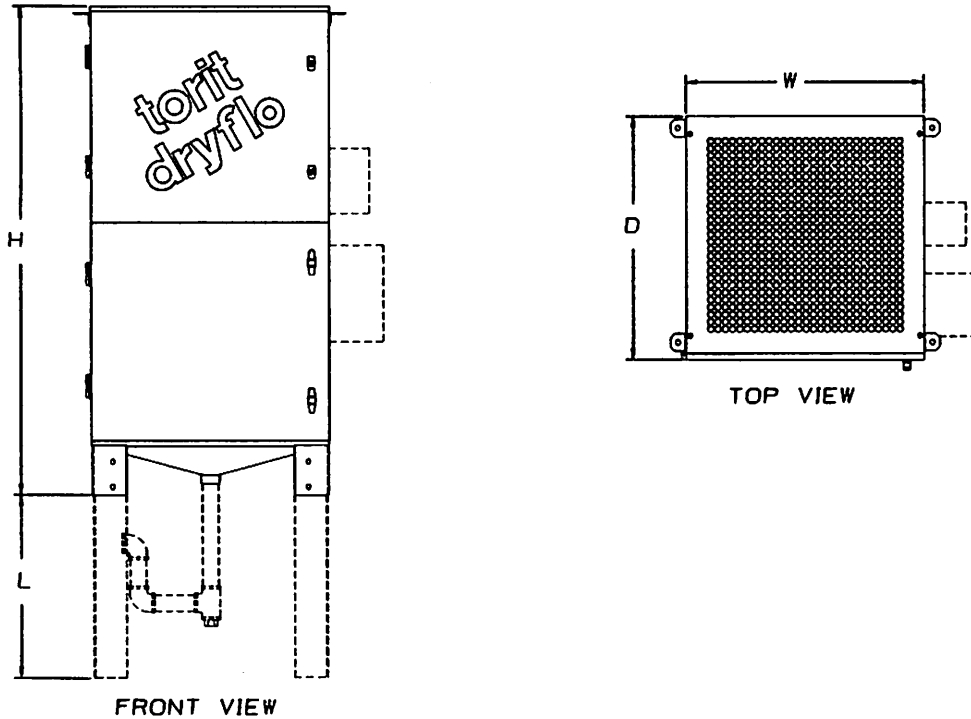


*Filter Retention System*

# Torit® Dryflo™ Mist Collectors

## Models B, C, D1

### Specifications



	Model B	Model C	Model D1
Clean Airflow, cfm	630	1070	2000
External Static Pressure, in. w.g.	1.2	1.2	0.8
Blower Motor, HP	1.5	3.0	7.5
Std Inlet Diameter, in.*	6	8	12
3rd Stage Filter Media Area, ft <sup>2</sup>	68	140	220
Noise Level, dBA **	70	68	77
Height H, in.	57.66	76.03	86.61
Leg Height L, in.	21.39	25.39	25.39
Width W, in.	28.18	28.18	28.18
Depth D, in.	28.88	28.88	28.88
Drain Size NPT, in.	1-1/2	1-1/2	1-1/2
Shipping Weight, lbs.	500	540	740

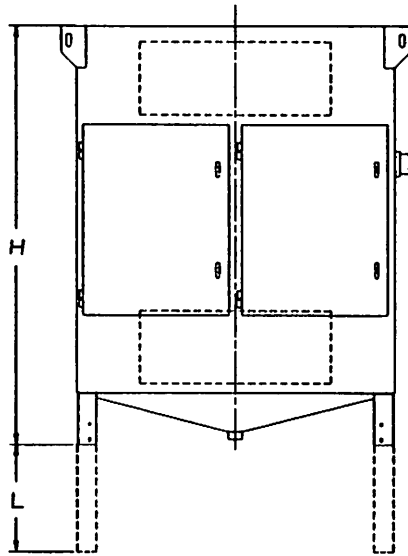
\* Other inlet sizes available

\*\* Measured at one meter

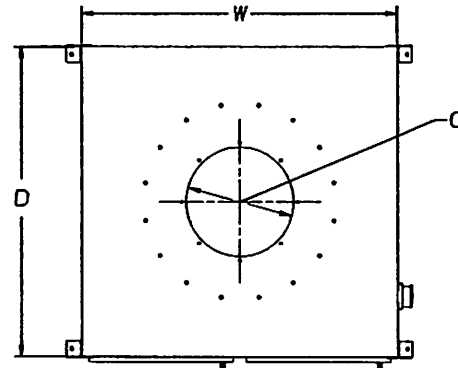
# Torit® Dryflo™ Mist Collectors

## Models D2, D4, D6, D8, D10

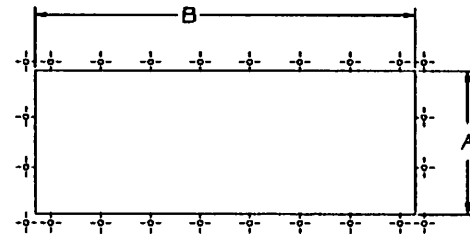
### Specifications



FRONT VIEW  
(MODEL D4 SHOWN)



TOP VIEW



INLET/OUTLET DETAIL

	Model D2	Model D4	Model D6	Model D8	Model D10
Airflow, cfm	3000-4400	6160-8800	9240-13200	12320-17600	15400-22000
3rd Stage Filter Media Area, ft <sup>2</sup>	440	880	1320	1760	2200
Housing Rating, in. w.g.	-20	-20	-20	-20	-20
Height H, in.	67.67	81.45	98.22	109.00	123.82
Leg Height L, in.	28.28	28.28	26.20	26.20	26.20
Width W, in.	31.27	62.27	97.00	128.06	159.00
Depth D, in.	60.00	60.00	63.73	63.73	63.73
Side Inlet/Outlet, in. A x B	7.95 x 26.46	14.06 x 37.48	17.80 x 44.17	20.94 x 49.29	26.46 x 49.29
Top Outlet, dia. in. C	16	16	16	N/A	N/A
Drain Size NPT, in.	1-1/2	2	2	2	2
Shipping Weight, lbs.	635	1725	2125	2900	3550

# Torit® Dryflo™ Mist Collectors

## Options and Accessories

- HEPA Filtration
- Torit TBI Fans - Models D2, D4, D6
- Motor Starters and Controls
- P-Traps and Drain Kits
- Support Legs
- Optional First Stage Filters
- Platform and Ladder

## Torit Dryflo Applications

- Turning Centers
- Lathes
- Mills
- Screw Machines
- Cold Heading & Forming
- Hobbing
- Drilling
- Boring
- Wet Grinding
- Transfer Machines
- Rolling
- Stamping/Drawing



**Donaldson Company, Inc.**  
Torit & Day  
P.O. Box 1299  
Minneapolis, MN 55440  
1-800-365-1331

*Filtration solutions for a cleaner world.*

Patents Pending

All Torit Dryflo Mist Collectors are manufactured in the USA.

Printed in U.S.A.

© 1994 Donaldson Company, Inc.



Printed on Recycled Paper

Form Dryflo (10/94)